

# Jim Munnion Painting/Prints

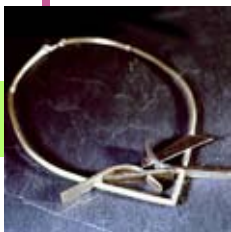
I am a Painter/Printmaker working from my studio in the Brendon Hills near to Wiveliscombe. My work covers a wide range of subject matter, much of which is currently drawn from the ever changing and dramatic landscape of the Exmoor area.

My work is often done directly outdoors or built up from sketches and pastel drawings made outdoors. I use these direct records as a starting point for exploring subjects in a contemporary and fresh way and in a range of different media, including Oil Painting, Screen prints and Wood block relief prints.

I am happy to discuss individual commissions based on landscapes and places anywhere in the UK.

## contact:

- 01984 623357
- [jmunnion@btinternet.com](mailto:jmunnion@btinternet.com)
- <http://munnionart.moonfruit.com>
- Wiveliscombe, Somerset



# Penny Price Jewellery

My obsession is with form and structure. The forms that I create are inspired by nature, landscape, architecture and life drawing. The challenge is to translate my ideas into wearable pieces whose qualities reflect the individuality of the wearer.

Surface colours and decoration are incidental and only used to emphasise or highlight a structure. My objective is that each form is decorative and complete in its own right without further need for embellishment. I certainly belong to the 'Less is More' school of thought!

I studied jewellery design at Central School of Art, London and have exhibited at The Goldsmiths Hall, The Design Centre, The Business Design Centre and many smaller galleries. In 1976 I was commissioned by Pink Floyd to make silver pigs to commemorate their 'Animals' tour.

I moved to the Midlands in 1978 where I exhibited in many galleries and taught wax carving at community workshops. In 1997 I was commissioned by the charity 'Tusk' to produce a range of pendants featuring endangered species. In 2007 I moved to Milverton where I regularly organise exhibitions and exhibit my work.

## contact:

- 01823 400332
- pennyjanepriec@hotmail.com
- www.pennyprice.co.uk
- Milverton, Somerset



# Angie Rooke Painting

Ancient hills, fields, woodland and weather; winter sunsets and summer dawn on the levels...

Feeling so lucky to be living out in the Somerset countryside, my paintings are all about the landscape. Moved by the timeless feel of isolated places, from the wild Cornish countryside through Devon and Somerset's rural beauty to the mysterious places of Wiltshire and Dorset.

To imagine or remember a place and recreate it on canvas with atmosphere is the challenge. Observing the patterns and colours of the countryside and the passing of the seasons - a satisfactory occupation that makes life very rich.

## contact:

- 01749 890368
- [angierooke@yahoo.com](mailto:angierooke@yahoo.com)
- [www.angierooke.co.uk](http://www.angierooke.co.uk)
- North Wootton, Somerset



# Chris Webb Sculpture

I work primarily in Portland stone to create large, rounded organic pieces, sometimes inspired by the human form. More often I sculpt from a visual image which has come into my mind and which I then try to recreate from within the stone.

I like to work in diffused light constantly using my hands to stroke and caress the stone, often with my eyes shut allowing my hands to feel and explore the curves which I find calming and yet exhilarating. I use touch as a form of instinctive communication, I don't think with the spoken word.

To me the pieces are as much about touch as about visual art and the frequent touching and caressing of the stone is a reassuring and nurturing process of revealing the form that lies within the stone.

I work to music ranging from opera to soul, drinking tea and eating far too many ginger nut biscuits. The dust gives me dry lips and makes my hair stick out, but most of all the finished piece makes me smile until my cheek bones ache.

## contact:

- 07973 953481
- hayleysroom@yahoo.co.uk
- www.chriswebb-sculptor.co.uk
- Staple Fitzpaine, Somerset



**EXHIBITION  
OF WORK BY  
SOMERSET  
ARTISTS**

**Kilver Court  
Shepton Mallet**

**February 2010**

**[WWW.GALLERY4ART.CO.UK](http://WWW.GALLERY4ART.CO.UK)**



# Rebecca Birtwhistle Drawing

Educated at The King's School, Worcester (1991–98) and Pembroke College, Oxford (1999–2002), Rebecca is also a qualified teacher.

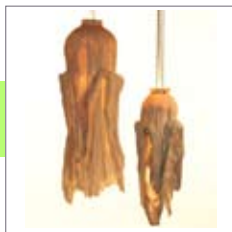
While studying at the Ruskin School of Drawing & Fine Art she rapidly established drawing as her specialist studio practice. Varying in approach, media and scale, drawing continues to underpin all aspects of her work. Journeys and site visits are documented in sketchbooks providing the reference and inspiration for subsequent drawings, mixed media studies, constructed books, prints and paintings.

Experiments with new techniques and imagery have led her to move between, or combine, carefully rendered detail and a looser, freer style. The contrasting approaches reflect a constant struggle for accurate portrayal while retaining a sense of immediacy, the challenge of 'doing less'. The limited, often monochromatic, palette of her recent work throws further emphasis on her use of line as a descriptive device.

Alongside her studio work, she has undertaken private commissions, designed logos, book illustrations and produced images. Her work has also featured in the scenery of an Alan Ayckbourn production.

## contact:

- 01823 257969
- [info@rebeccabirtwhistle.co.uk](mailto:info@rebeccabirtwhistle.co.uk)
- [www.rebeccabirtwhistle.co.uk](http://www.rebeccabirtwhistle.co.uk)
- Taunton, Somerset



# Lucy Brown Ceramics

I have been working from my studio near Cheddar since graduating from Falmouth College of Arts in 2004. I discovered Porcelain during my degree and fell in love with its translucency and life like qualities.

My inspiration comes from walks on the Mendips, pattern, texture, light and the clay itself. I try to keep my work quite free, I enjoy the wobbles and imperfections that occur naturally during the making and firing process. This gives each piece its own individual character and makes opening the kiln very exciting.

I am always happy to discuss commissions and welcome visitors to my studio by prior arrangement.

## contact:

- 07813 913309
- [contact@lucybrownceramics.co.uk](mailto:contact@lucybrownceramics.co.uk)
- [www.lucybrownceramics.co.uk](http://www.lucybrownceramics.co.uk)
- Cheddar, Somerset



# Melanie Deegan Sculpture

In 2006 Melanie returned to sculpting having originally trained and worked as a woodcarver in the 1980's before taking up a career as an analyst in the IT industry. Her woodcarving experience covered a wide range of projects involving anything from building restoration and furniture to carving wooden items for National Trust shops.

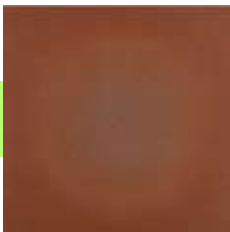
The desire for a more flexible approach to sculpture which allowed ideas to flow more easily encouraged Melanie to try other materials and techniques. Over the last few years she has been experimenting with a range of sculpting materials but now predominantly works with the acrylic based resin Jesmonite, which ideally suits her approach.

The work predominantly focuses on animals and capturing their movement in some form. Being strong and lightweight Jesmonite is versatile enough to be used for sculptures of all sizes and is suitable to be used outdoors. Each piece is unique, starting as an idea that is then outlined in wire to develop the design and create an armature before the final sculpture is produced by building up the layers of Jesmonite over the metal framework.

## contact:

- 01984 624544
- [info@melaniedeegan.com](mailto:info@melaniedeegan.com)
- [www.melaniedeegan.com](http://www.melaniedeegan.com)
- Wiveliscombe, Somerset





# Pennie Elfick Painting

My paintings and prints are informed by observing everyday occurrences in the landscape. I am investigating how colour and form can reflect an emotional feeling 'of place'. Resolutely abstract, these paintings are influenced by the Minimalists, but do not rigorously negate the hand of the maker.

My aim is to create work that has a duality, it is an emotional response to something natural but abstract in its pictorial structure. By removing figurative references to the natural work I am able to investigate the poetry that can be created from colour and form in a purely abstract manner. These canvases by the particular use of colour create surfaces that sit quietly and yet command attention from the viewer challenging them to contemplate and reassess what they think they see.

I exhibit across the Southwest and London and have undertaken commissions for international companies.

## contact:

- 01823 698821 / 07970 903128
- pennieelfick@aol.com
- [www.pennieelfick.co.uk](http://www.pennieelfick.co.uk)
- Stathe, Somerset



# Nic Wingate Photography

Photography has been a lifelong interest for Nic and, over the last decade or so, has also started to feature significantly in his professional life. This has included work as a press photographer, promotional work for the music industry and capturing high-speed images for a range of motor sports.

Backing up the photography is an in-depth knowledge of specialist printing technology which, alongside Nic's graphic design skills, form a significant part of his business. Nic is becoming recognised for his ability to work closely with the art world and provides a specialist service to artists interested in capturing original images in order to produce limited edition prints.

A particular photographic interest is the presentation of large, dramatic images, which include landscape views, but also the ability to take a section out of a larger image and present it in a striking way.

Nic is always interested in taking commissioned photographic work and can offer a specialist printing service for reproducing artwork and the production of large printed images.

## contact:

- **1984 629328**
- **nic@datafiler.co.uk**
- 
- **Wiveliscombe Somerset**